

OnSite Standard Product



Key Specifications

Diameter: 90mm / 3.5in
Length: 273mm / 10.75in
Weight: 3kg / 6.6lb (aluminum)
Material: Aluminum (optional 316 stainless steel)
Depth Rating: 60m / 200ft (optional 300m / 1,000ft)
Maximum Tether Length: 500m / 1,650ft
Operating Temperature: 0°-50° C / 32°-122° F

Minimum Illumination: 0.5 lux
Resolution: 540 TV lines
Focus: Auto or manual
Iris: Auto or manual
Lights: 3 x High intensity variable LEDs
Controls: 360° continuous pan, 280° tilt, zoom, focus, lights, lasers, exposure level
Variable Pan Speed: 0-26°/sec
Variable Tilt Speed: 0-7°/sec
Zoom: 120x (10x optical, 12x digital)
HFOV: 54° in air
Format: PAL or NTSC
Power: Voltage (Nom) = 40-54VDC 65W
Focal Range: 10mm / 0.4in - infinity

Spectrum 90™ (SP90)



Industries & Applications

- Mining
- Municipal (Sewer/Water)
- Nuclear
- Oil & Gas (Onshore/Offshore)
- Petrochemical

Inuktun's most popular camera, the Spectrum 90™, provides amphibious pan, tilt and zoom (PTZ) functionality in a remarkably small package. Incorporating a range of options and extended capabilities, the SP90 is ideal for the remote visual inspection of subsea structures, nuclear power installations, pressure vessels, storage tanks, pipelines, or any industrial structure that precludes manned entry. And, because of its unique spherical head design, all of the functions can be utilized without ever changing the working envelope of the camera – meaning it won't get stuck, even in the tightest spaces.

Available as an OEM product for integration into third party designs, a full turn-key inspection package or as part of a complete crawler system, the standard Spectrum 90™ camera includes variable intensity LED lighting, optical and digital zoom, automatic or manual focus and exposure control inclinometer, and accurate position feedback. With available options including embedded parallel laser lines, stainless steel construction and deep-water certification the potential applications are almost limitless.



"We were recently reviewing some in-pipe videos on a municipal system, and the municipality commented that the footage was the best quality video they have ever seen."

– B. Cameron, Founder of Dougness Holdings

All specifications are subject to change

STANDARD IM3 OPTIONS

Custom configurations:
See dealer for details



Material

Aluminum
or
Stainless Steel

Depth Rating

60m / 200ft
or
300m / 1000ft
Sacrificial anodes for subsea applications available

Spot LEDs

Upgrade to spot lights for longer distance inspection work in large and open areas.



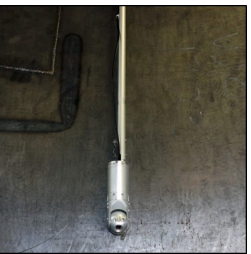
Lasers

Optional parallel laser lines for on-screen size estimation
1.5mW, 635nm, class 2, 30mm separation



Control System

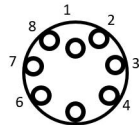
Spectrum™ or Versatrax™ controller; Pelican® case; membrane panel with joystick input, video text overlay with keyboard entry, date/time & camera feedback.



Pin-lock Pole

Aluminum pin-lock pole system is designed for ad-hoc or scheduled inspections. Ideal for fuel pools, storage tanks, wells, caissons or almost any hard to reach location, these poles are lightweight and extremely durable. And, because they are modular in design, you can simply add more poles to get to the length you need!

Connector Pin-out

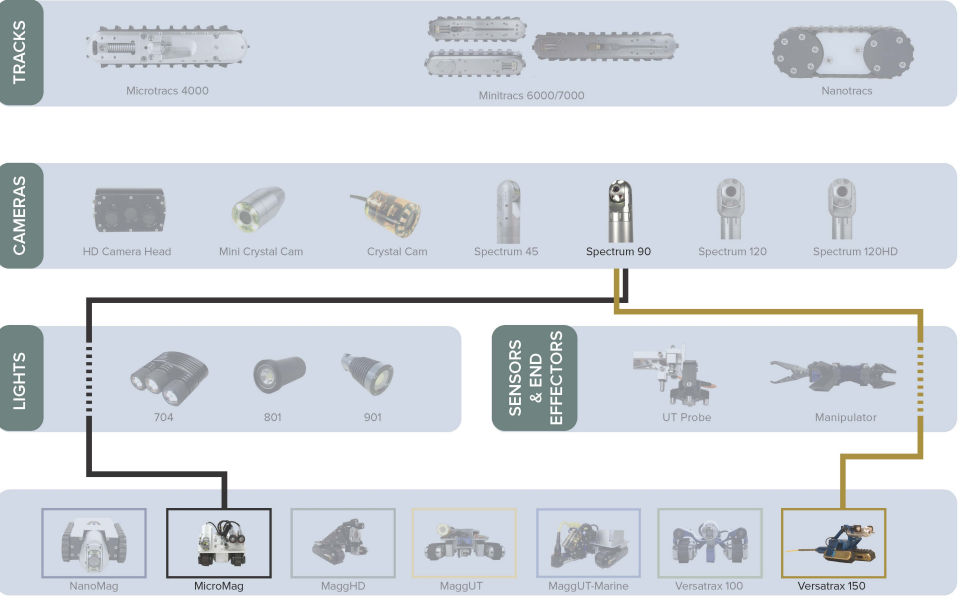


FACE VIEW

CN1

GND	1
VIN	2
RS485A	3
RS485B	4
SpareA	5
SpareB	6
Video(+)	7
Video(-)	8

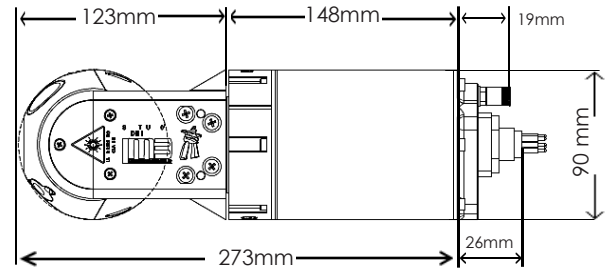
Spectrum 90™



Spectrum 90™ Dimensions

Call for imperial/metric fastener measurements.

60m / 200ft



300m / 1,000ft

